


NELSON MANDELA

UNIVERSITY

IN CONTEXT





We offer quality higher education to nearly **32 000 students** across seven campuses, making us the largest university in the Eastern and Southern Cape.



CONTENTS

ABOUT US	4
OUR IDENTITY AS NELSON MANDELA UNIVERSITY	6
WHAT WE OFFER	9
OUR CAMPUSES	10
VISION 2030 AND STRATEGIC TRAJECTORIES	12
OUR RESEARCH THEMES	16
RESEARCH AND ENGAGEMENT	18
OUR FACULTIES	20
FACILITIES & VENUES	29
ALUMNI	30
MANDELA IN NUMBERS	33

ABOUT US

DYNAMIC AND FORWARD-THINKING, NELSON MANDELA UNIVERSITY IS A LEADER IN GENERATING CUTTING-EDGE KNOWLEDGE FOR A SUSTAINABLE FUTURE. **WE STRIVE TO CHANGE THE WORLD.**

As a socially embedded African university in the service of society, we offer a range of life-changing educational experiences, impactful research and innovation, and transformative engagement. These academic core missions are rooted in and informed by recent milestones in the University's history, such as the 2017 name change to Nelson Mandela University, the Vice-Chancellor's listening campaign, inaugural and Advancing Mandela addresses, and a transversal organisational redesign.

The new name signified a change from Nelson Mandela Metropolitan University, which itself was the result of the merging of the PE Technikon, the University of Port Elizabeth and the Port Elizabeth campus of Vista University.

The union of these institutions was part of countrywide restructuring of higher education, intended to deliver a more equitable and efficient system to meet the needs of South Africa, the continent, and the world in the 21st century.

Founded on more than a century of quality higher education, Nelson Mandela University nurtures innovation, fosters creativity, embraces technological advancement, and develops people to add value in an evolving world.

We offer quality higher education to nearly 32 000 students across seven campuses, making us the largest university in the Eastern and Southern Cape.

Today, Nelson Mandela University is a sought-after educational destination in South Africa and the only higher education institution in the world to carry the name of Nelson Rolihlahla Mandela.



Along with a first-class academic education, Nelson Mandela University provides students with a vibrant student life beyond the classroom.



OUR IDENTITY AS NELSON MANDELA UNIVERSITY

NELSON MANDELA UNIVERSITY EMBRACES THE RESPONSIBILITY, AND HONOUR, OF EMBODYING **THE LEGACY AND ETHOS OF THE LATE NELSON MANDELA.**

As the only university in the world to bear this name, we have been given the opportunity to rebrand and position our institution continentally and globally, while also ushering in a new era of renewed vigour towards meaningful transformation.

Over and above our geography as part of a metro, our new identity places greater focus on reflecting the values and spirit of Mandela, the man.

Nelson Mandela's lifelong struggle for a non-racial, non-sexist, demographic society, where all citizens are treated with respect and dignity, resonates with the vision we strive to instil in our graduates. Transformation and the need to build social cohesion in addressing social justice and equality are integral to this.

Whether they step on to one of our campuses in person or meet us online, we want all stakeholders to experience Mandela's presence intellectually as well as visually through the values-driven conduct of our students and staff, our built environment and artworks, and our inclusive institutional culture.

This includes the commitment to developing emergent African scholars and academics who bring a diversity of thought to traditional knowledge systems and paradigms.



Through the direction given by our Vision 2030 strategy, Mandela University has reasserted transformative engagement as a core academic mission alongside learning and teaching, research, innovation, and internationalisation.





WHAT WE OFFER

NELSON MANDELA UNIVERSITY OFFERS BOTH GENERAL FORMATIVE AND PROFESSIONALLY ORIENTATED UNIVERSITY PROGRAMMES **FROM CERTIFICATE THROUGH TO DOCTORAL LEVEL.**



We have a strong track record in both fundamental and applied research, working extensively in partnership with business, industry, government, and civil society.

The institution has 500 study programmes across seven faculties that foster academic excellence. We are well known for science, engineering, computer science and information technology (IT), art and design, architecture and the built environment, chartered accounting, health and environmental sciences, education, and law. Programmes are internationally recognised and accredited by the relevant professional bodies.

As a comprehensive university, we strive to widen student access for success. To this end, we offer extended curriculum programmes, as well as a wide range of academic support programmes and services. State-of-the-art IT services include WiFi connectivity across all campuses and in numerous off-campus facilities, as well as advanced technological resources and digital aids geared to effective in-person and blended modes of learning and teaching.

Along with a first-class academic education, Nelson Mandela University provides students with a vibrant student life beyond the classroom. We aim to produce holistic graduates who are lifelong learners as well as socially conscious and responsible global citizens.



OUR CAMPUSES



NORTH CAMPUS



BIRD STREET CAMPUS



OCEAN SCIENCES CAMPUS



GEORGE CAMPUS



SECOND AVENUE CAMPUS



MISSIONVALE CAMPUS



SOUTH CAMPUS

OUR SEVEN CAMPUSES HAVE A LARGE, EVER-INCREASING FOOTPRINT IN NELSON MANDELA BAY AND GEORGE.

In 2022 alone, we invested three-quarters of a billion rand in campus infrastructure. This is a massive investment in both the University and the city, contributing to its economic development and urban renewal.

Six of our campuses are in Gqeberha, in Nelson Mandela Bay, in the Eastern Cape Province. Four are in Summerstrand, one in Bird Street in Central, and one in Missionvale. Our North and South campuses in Summerstrand are located on an 840-hectare private nature reserve.

The seventh – our George Campus – is on the Garden Route, midway between Nelson Mandela Bay and Cape Town. Set at the foot of the Outeniqua Mountains, our “sustainability” campus is home to two centres of excellence – the School of Natural Resource Management and the School for Business and Social Sciences. This is where our ecological footprint meets business acumen for a sustainable future.



VISION 2030 & STRATEGIC TRAJECTORIES

THE COUNCIL OF NELSON MANDELA UNIVERSITY APPROVED THE UNIVERSITY'S VISION 2030 STRATEGY IN 2021 AS A PLANNING ROADMAP FOR THE CURRENT DECADE. **IT HIGHLIGHTS HOW THE UNIVERSITY IS BREAKING GROUND IN KEY AREAS AND INCLUDES MAJOR STRATEGIC TRAJECTORIES.**

Medical School

Our programme to train MBChB graduates in Gqeberha is one of its kind in South Africa and the only medical school in the western part of the Eastern Cape. Intentionally anchored in Missionvale to engender urban renewal and regeneration, our medical school is set to make a tangible contribution to building capacity for accessible, quality healthcare services to the most marginalised and vulnerable in society.

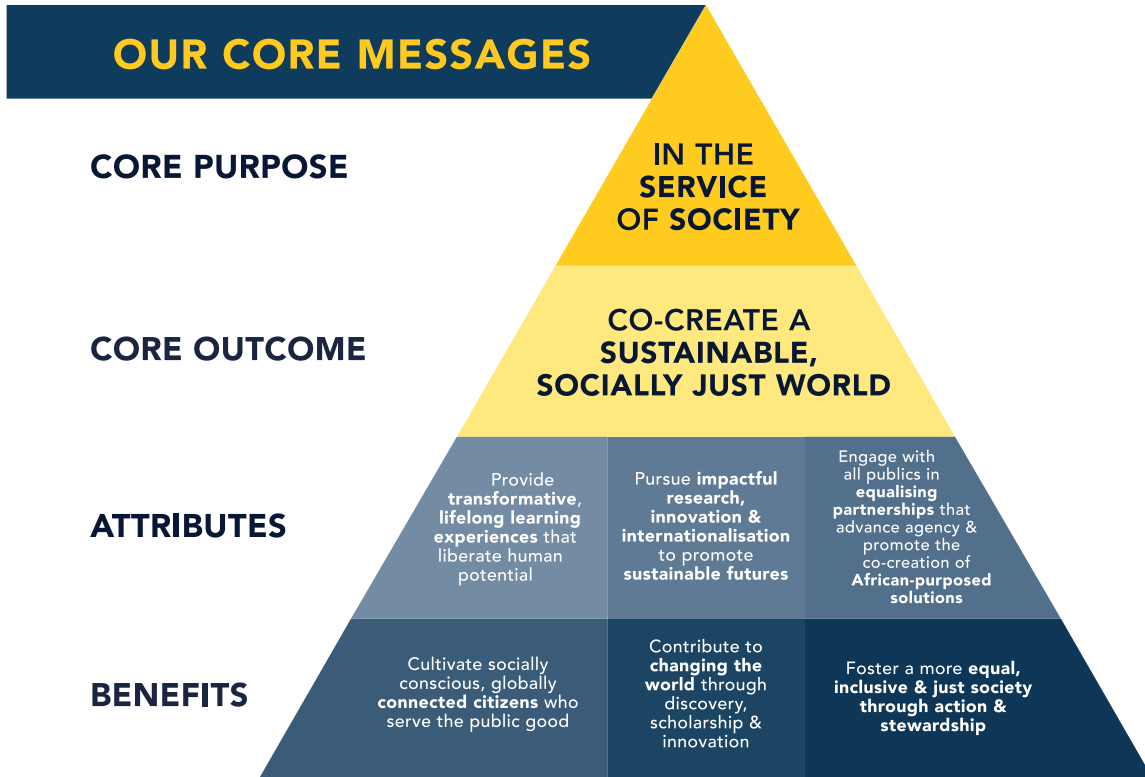
Through our unique community-focused approach, our medical programme sets out to train caring, competent and committed primary healthcare oriented medical doctors. They learn how to work collaboratively as members of inter-professional teams, and practice in holistic and culturally sensitive ways.

Ocean Sciences

The University has developed a range of inter- and transdisciplinary marine and maritime education and training, research, innovation, and engagement programmes to support Africa's blue economy. Nelson Mandela University boasts the only ocean sciences campus in South Africa and was ranked by the Times Higher Education Impact Rankings as the top institution in the country for UN Sustainable Development Goal Four: Life Below Water in 2022. We continue to extend our ocean sciences



partnerships and footprint in our continent and globally. One of the latest exciting developments is the construction of a Science Centre and Digital Dome on the Ocean Sciences campus, which will significantly enhance engagement programmes with schools and the public generally.



Revitalising the humanities

Our critical engagement with what it means to revitalise the humanities includes a focus on decoloniality and indigenous knowledges. This is part of our quest to reimagine the transformative potential of all disciplines in awakening African scholarship and systems of thought while interrogating Western hegemonies. This includes the work being done to unearth African archives and the scholarly work of early African intellectuals.



Engagement and transformation

We are on a journey of transformative engagement, which seeks to facilitate equalising partnerships with stakeholders and communities across different domains of science and programmatic interventions.

There is a conscious effort to draw together internal and external stakeholders, inviting staff and students to participate in a broad range of scholarly and programmatic activities and projects. In co-creating a socially embedded and responsive university, in part through our Hubs of Convergence and humanising practices, we are making a tangible difference in our communities as we strive to promote social justice.



D. VANSTADEN

St. Mary's
University

HELION
UNIVERSITY

Virtual Academy and Digitalisation

We are investing significant resources in advancing digitalisation in pursuit of excellence. This includes addressing the digital divide, broadening access to mobile devices and data connectivity, and upskilling students and staff for flexible modes of learning and work. University funding has been channelled to networking and connectivity infrastructure, improving e-readiness of teaching and learning venues across all campuses, enhancing data centre resilience and efficiency, and improving cybersecurity.

Rapid technological advances in all sectors of society, accelerated by the impact of the COVID-19 pandemic, present new insights and opportunities for our “virtual academy” of the 21st century.

Sustainability

The University approaches sustainability in a holistic manner through the interplay between the ecological, social and economic dimensions. Recognising that these are indivisible in addressing complex global challenges, sustainability science is a fundamental facet of all disciplines, and across many aspects of campus life. Sustainability is therefore embedded in our core academic missions and campus operations to promote a fair, liveable and viable world. There are plans to launch a new Transdisciplinary Institute for Sustainable Futures that will include exciting work on the hydrogen economy.

Youth Employability and Student Entrepreneurship

Building on the successes of our Student, Employability and Entrepreneurship Development project and Madibaz Youth Entrepreneurship Lab, the University is gearing up to create a youth entrepreneurship incubator in partnership with the national Department of Small Business Development. To be known as the Mandela Africa Hub for Entrepreneurship and Social Innovation, this incubator will be an integrated platform for collaborative partnerships and learning to develop Afrocentric young entrepreneurs and social innovators in critical sectors.

Food Security and Food Sovereignty

Food security and sovereignty are key indicators of just, sustainable development, and challenges in this area are interconnected with challenges in providing safe and reliable sources of water and energy. In response Nelson Mandela University has a highly productive Food Systems Working Group and will set up a Food Systems Research Chair to help address the challenge of hunger in the context of climate change in southern Africa.

Women and Gender Studies

With gender-based violence one of the most intractable challenges confronting South Africa, Nelson Mandela University established the Centre for Women and Gender Studies (CWGS) to promote attitudinal and social transformation through women’s empowerment and gender equality.

The Centre also hosts the DSI-NRF SARCHI Chair in African Feminist Imaginations, which studies the creative arts, popular culture, and other expressions of African feminist energies. The Centre’s mandate is to mainstream gender in teaching and to promote scholarly engagements that transform attitudes towards gender transformation.



RESEARCH THEMES

NELSON MANDELA UNIVERSITY HAS **SIX TRANSVERSAL INSTITUTIONAL RESEARCH THEMES.**

Ocean and Coastal Sciences

Nelson Mandela University encourages research from inter- and transdisciplinary perspectives to contribute to addressing a broad range of complex issues related to oceans and coasts. Boasting its own Ocean Sciences Campus, areas of study include estuaries, shallow water coastal systems and wetlands, maritime management, ocean governance and law of the seas, ocean cultures and heritage, and pelagic systems.

Social Justice and Democracy

Connected to the values underlying South Africa's Constitution, this theme embodies the ethos of Nelson Mandela University. Research in this area is aimed at creating an inclusive and equitable society through education, research, and engagement.

Environmental Stewardship and Sustainable Livelihoods

Building on our key research strengths in natural sciences, this theme has expanded across multiple disciplines, for example, science, engineering, technology, social sciences and humanities, and health sciences. Research on this theme contributes to the University's commitment to making a positive impact on the world for a sustainable future.

Innovation and the Digital Economy

This research theme recognises the imperative to prepare students, staff, and stakeholders for rapid digital transformation not only in information and communication technology but across all spheres of society.

Origins, Culture, Heritage, and Memory

With South Africa one of the earliest recorded homes of humankind, this theme allows for research on tangible and intangible heritages nationally and internationally. It seeks to establish alternative narratives of the past and uncover silenced knowledge.

Humanising Pedagogies

This theme aims to liberate the full human potential of all staff and students through the pedagogical encounter. Humanising pedagogies develop a teaching and learning interface that enables agency, a sense of coming not only to know, but also to own the knowledge and be empowered by it.





Our South African Research Chairs Initiative (SARChI) chairs, National Research Foundation-rated researchers, and the University's research and engagement entities champion these themes within and across disciplines.

RESEARCH & ENGAGEMENT

NELSON MANDELA UNIVERSITY RESEARCH AND ENGAGEMENT ENTITIES ARE FLAGSHIP STRUCTURES, CRITICAL IN THE UNIVERSITY'S PURSUIT OF IMPACTFUL RESEARCH, INNOVATION, INTERNATIONALISATION, AND TRANSFORMATIVE ENGAGEMENT TO **PROMOTE SUSTAINABLE FUTURES.**

Our entities develop and strengthen existing engagement and scholarly activities through mutually beneficial partnerships with external communities, aligned with the University's strategic direction and priorities.

Engagement entities

- Advanced Mechatronic Technology Centre
- Centre for Community Technologies
- Centre for Integrated Post-School Education and Training
- Centre for Law in Action
- Centre for the Community School
- eNtsa
- Govan Mbeki Maths Development Centre
- Labour and Social Security Law Unit
- Marine Robotics Unit
- South African International Maritime Institute
- Southern Africa Cisco Academy Support Centre
- Unit for Biokinetics and Sport Science
- Unit for Statistical Consultation
- University Psychology Clinic

Research entities

- Africa Earth Observatory Network – Earth Stewardship Research Institute
- InnoVenton: Institute for Chemical Technology and Downstream Chemical Technology Station
- Institute for Coastal and Marine Research
- Centre for the Advancement of Non-Racialism and Democracy
- Centre for Women and Gender Studies
- HIV and AIDS Research Unit

Centres in faculties

- African Centre for Coastal Palaeoscience
- Built Environment Research Centre
- Centre for African Conservation Ecology
- Centre for Broadband Communication
- Centre for Energy Research
- Centre for High Resolution Transmission Electron Microscopy
- Centre for Philosophy in Africa
- Centre for Research in Information and Cyber Security
- Centre for Rubber Science and Technology
- Centre of Expertise in Forecasting
- Raymond Mhlaba Centre for Leadership and Governance
- Telkom Centre of Excellence



Units in faculties

- Action Research Unit (Education)
- Drug Utilisation Research Unit
- Family Business Unit
- Friction Processing Research Unit
- Research and Outreach Unit for Technology Education
- Science, Mathematics and Technology Education Unit
- Sustainability Research Unit
- Unit for Applied Management Sciences
- Unit for Economic Development and Tourism
- Unit for Positive Organisations
- Unit for Visual Methodologies for Social Change

Research Chairs

In addition to the research and engagement entities listed above, Nelson Mandela University also hosts the following research chairs:

- DSI-NRF SARCHI Chair in Law of the Sea and Development in Africa (Prof Patrick Vrancken)
- DSI-NRF SARCHI Chair in Marine Spatial Planning (Prof Mandy Lombard)
- DSI-NRF SARCHI Chair in Shallow Water Ecosystems (Prof Janine Adams)
- DSI-NRF SARCHI Chair in Ocean Cultures and Heritage (Prof Rose Boswell)
- Joint DSI-NRF SARCHI Chair in Ocean Science and Food Security (Prof Mike Roberts), joint appointment with Southampton University
- DSI-NRF SARCHI Chair in Microfluidic Bio-Chemical Processing (Prof Paul Watts)
- DSI-NRF SARCHI Chair in Identities and Social Cohesion in Africa (Prof Andrea Hurst)
- Joint DSI-NRF SARCHI Chair in Community, Adult and Worker Education (Prof Salim Vally, based at the University of Johannesburg)
- Chair for Critical Studies in Higher Education Transformation (Prof Andre Keet)
- Chair for Youth Unemployment, Employability and Empowerment



- DSI-NRF SARCHI Chair in African Feminist Imagination (Prof Pumla Dineo Gqola)
- merSETA Chair in Engineering Development (Karl du Preez)
- UNESCO Chair in Physical Activity and Health in Educational Settings, with the University of Basel (Prof Cheryl Walter)
- AIDC-EC Chair in Automotive Engineering (Martin Sanne)
- Chair in Human Settlements (Prof Sijekula Mbanga)
- ISUZU Chair in Mechatronics (Prof Igor Gorlach)
- DSI Chair in Nanomedicine (Dr Steven Mufamadi)

OUR FACULTIES

Faculty of Business and Economic Sciences

The Faculty of Business and Economic Sciences is the largest of the seven faculties in the University and is active on three campuses: South and Second Avenue in Gqeberha, and George Campus. The character of this faculty aligns with the ethos of Nelson Mandela University as a comprehensive institution where students can enrol for a Higher Certificate and eventually graduate with a PhD qualification.

The faculty caters for a diverse range of commerce and business qualifications and professions. It is constantly transforming curricula to grow students' talent in line with the University's desired graduate attributes, to enable graduates to contribute

meaningfully to society at large. The research portfolio reflects the diversity of the different departments and disciplines. Postgraduate students and staff engage in various research projects within the business environment and local communities with the aim of promoting positive social and economic development.

A strong network of relationships with the business community is combined with an academic focus on the science of business and economic sciences to give students a solid theoretical foundation as well as career-directed competencies.

The faculty has five schools:

- ▶ **Business School**
- ▶ **School for Industrial Psychology and Human Resources**
- ▶ **School of Accounting**
- ▶ **School of Economics, Development and Tourism**
- ▶ **School of Management Sciences**

Coursework and research postgraduate programmes are offered across all disciplines in the faculty. The faculty offers several programmes that enjoy professional accreditation: MBA, DBA, postgraduate diploma in financial planning, a chartered accountancy programme, professional and general management accounting, and internal auditing.

The University's Business School, based at the "green" premises on the Second Avenue Campus, offers a comprehensive range of formal and non-formal programmes aimed at providing managers with a thorough grounding in the fundamental elements of business administration, management and leadership.



Faculty of Education

The Faculty of Education is an important role-player in offering a range of initial teacher education, teacher upgrading, and postgraduate programmes to meet the demand for qualified teaching and related professionals in South Africa. At the same time, it also addresses development needs in the field of education.

The faculty's programmes, which all embrace a humanising pedagogy, are designed to train new teachers as well as those who wish to further their understanding and develop new educational insights. Initial teacher education programmes focus on primary or secondary school teaching.



A strong emphasis is also placed on in-service training programmes to develop the capacity and qualifications of teachers in priority areas.

A range of postgraduate programmes is geared towards the needs of working teachers and other education professionals to advance their knowledge and educational leadership skills.

The faculty has five schools:

- ▶ **Primary School Education: Foundation Phase**
- ▶ **Primary School Education: Intermediate Phase**
- ▶ **Secondary School Education**
- ▶ **Post Schooling**
- ▶ **Postgraduate Education**



Faculty of Engineering, the Built Environment and Technology

The Faculty of Engineering, the Built Environment and Technology (EBET) offers a range of quality programmes including higher certificates, diplomas, advanced diplomas, and bachelor's degrees. It also offers postgraduate programmes such as: postgraduate diplomas, honours, master's, and doctoral degrees in a broad range of disciplines.

It combines top facilities, state-of-the-art technology, and stimulating training to nurture and inspire responsible and responsive graduates. Academic programmes are offered in the fields of architecture; engineering (civil, electrical, industrial, marine, mechanical, mechatronic); information technology (software development, communication networks, support services, applied informatics); quality management; operations management; building and human settlement development; quantity surveying; and construction management.

All programmes, where applicable, are accredited by the relevant professional bodies, that is, the Engineering Council of SA (ECSA); SA Council for the Architectural Profession (SACAP); SA Council for the Project and Construction Management Professions (SACPCMP); SA Council for the Quantity Surveying Profession (SACQSP); and SA Maritime Safety Authority (SAMSA).

The faculty's engagements with industry and government, as well as hands-on experience and sophisticated technology, combined with local, national and international partnerships and collaboration, set our graduates apart as global citizens ready to find solutions to challenges and make an impact in society.

The faculty has four schools:

- ▶ School of Architecture
- ▶ School of Engineering
- ▶ School of Information Technology
- ▶ School of the Built Environment and Civil Engineering



Faculty of Health Sciences

Our Faculty of Health Sciences offers learning, research and health service delivery, integrated into a clinical training platform aiming to serve communities that are most in need, with a focus on primary healthcare.

As part of the re-education and Africanisation of some of our



programmes, we are revisiting the training platform of all our students to ensure that we are training health practitioners who are fit for purpose.

The Faculty of Health Sciences has a clear focus on South Africa's pressing health and welfare needs, training and equipping professionals to face the challenges of developing prevention and health promotion strategies, and the need for restructuring health and welfare service delivery.

Close ties with the professions, industry and the workplace ensure that programmes are geared to real needs and that students gain practical experience while they study.

The faculty has three schools:

- ▶ **Behavioural and Lifestyle Sciences**
- ▶ **Clinical Care and Medicinal Sciences**
- ▶ **Medical School**

The newest of these, our Medical School, is intentionally positioned on the Missionvale Campus and accepted its first cohort of MBChB students in 2021. This flagship school does not stand alone, however, but is complemented by 10 departments.

The faculty is supported by two directorates:

- Learning and Teaching
- Research

Diploma and degree programmes equip students for a wide range of careers in environmental health, biomedical technology, nursing, psychology, human movement science, biokinetics, sport management, pharmacy, radiography, social development professions, youth work, dietetics, and emergency medical care.

All these departments work together using the inter-professional education and collaborative practice (IPECP) model with the theme: "transforming health sciences education to support equity in health".



Faculty of Humanities

The Faculty of Humanities at Nelson Mandela University is a vibrant, imaginative and socially engaged space, in which a diversity of interesting and valuable qualifications are offered in three interdisciplinary schools.

The faculty has three schools:

- ▶ **School of Governmental and Social Sciences**
- ▶ **School of Language, Media and Communication**
- ▶ **School of Visual and Performing Arts**

Within these schools, creative and performing arts such as photography, painting, interior and graphic design, sculpture and music are offered as well as the human and social sciences such as history, philosophy, anthropology, sociology, politics, and public management.

Programmes span the boundaries of the arts and include nationally and internationally recognised qualifications in

literature, linguistics, media, communication and culture, and public relations.

The faculty offers a range of under- and postgraduate certificates, diplomas and degrees to equip graduates with critical thinking, creativity, problem-solving and communication skills, combined with theoretical knowledge to enhance their academic and professional development.

The faculty is committed to creating a community of enquiring minds and a culture of ownership that encourages students to value and challenge inherited wisdom and beliefs, to relish constructive debate of diverse ideas, and to participate in the creation of new knowledge.



Faculty of Law

The Faculty of Law focuses on delivering high quality qualifications while making its own particular contribution to the legal landscape.

The corridors of the faculty are vibrant, filled with the voices of determined students and committed staff who work tirelessly to inspire and guide students through their studies.

The ethos is to maximise the ability of our graduates to secure employment or start businesses where they are able to use their qualification and legal knowledge to contribute to addressing societal challenges.

The Faculty of Law aims to develop legal professionals committed to the cause of justice and able to make meaningful contributions to critical debates about legal reform.

The faculty departments are:

- ▶ **Public Law**
- ▶ **Mercantile Law**
- ▶ **Private Law**
- ▶ **Criminal and Procedural Law**

The LLB programme integrates theory and practice to prepare students for the real world of the legal profession. Skills training is an integral part of the programme as students are given the opportunity to develop their skills through moot court sessions in our state-of-the-art courtroom. They also work at the University's Law Clinic on the Missionvale Campus.

The faculty's wide-ranging research interests and expertise support research LLM and LLD degree studies in several areas. Focused coursework LLM programmes are also offered to equip graduates with specialist knowledge in fields such as maritime law, labour law, and criminal justice.

Faculty staff are widely involved in the legal community and profession through the Law Clinic, the Labour and Social Security Law Unit, the publication of the faculty's accredited law journal *Obiter*, and acting as legal consultants and assessors. The Eastern Cape office of the national Street Law programme is also housed at Nelson Mandela University, as is the Refugee Rights Centre, and FishFORCE, South Africa's first Fisheries Law Enforcement Academy.



Faculty of Science

The faculty's vision is to be a world-class engaged and transdisciplinary African Faculty of Science that responds to socio-economic and environmental challenges. Its mission is to offer a diverse range of life-changing pure and applied science-based learning, teaching, research, training, innovation, engagement, and transformational experiences, which develop excellent graduate and staff attributes for sustainable futures.

The faculty has six academic clusters:

- ▶ **Life, Earth, Environmental and Agricultural Sciences (LEEAS)**
- ▶ **Physical Sciences**
- ▶ **Mathematical and Computational Sciences**
- ▶ **Biosciences and Biotechnology**
- ▶ **Natural Resource Science and Management (George Campus)**
- ▶ **X-Stream (where X refers to cross-, multi-, inter- or transdisciplinary)**

The following departments are aligned with these clusters: agricultural science and management; botany, zoology, and geosciences (geology and geography); chemistry; physics; mathematics, computing sciences, and statistics; biochemistry and microbiology; physiology; nature conservation, and forestry.

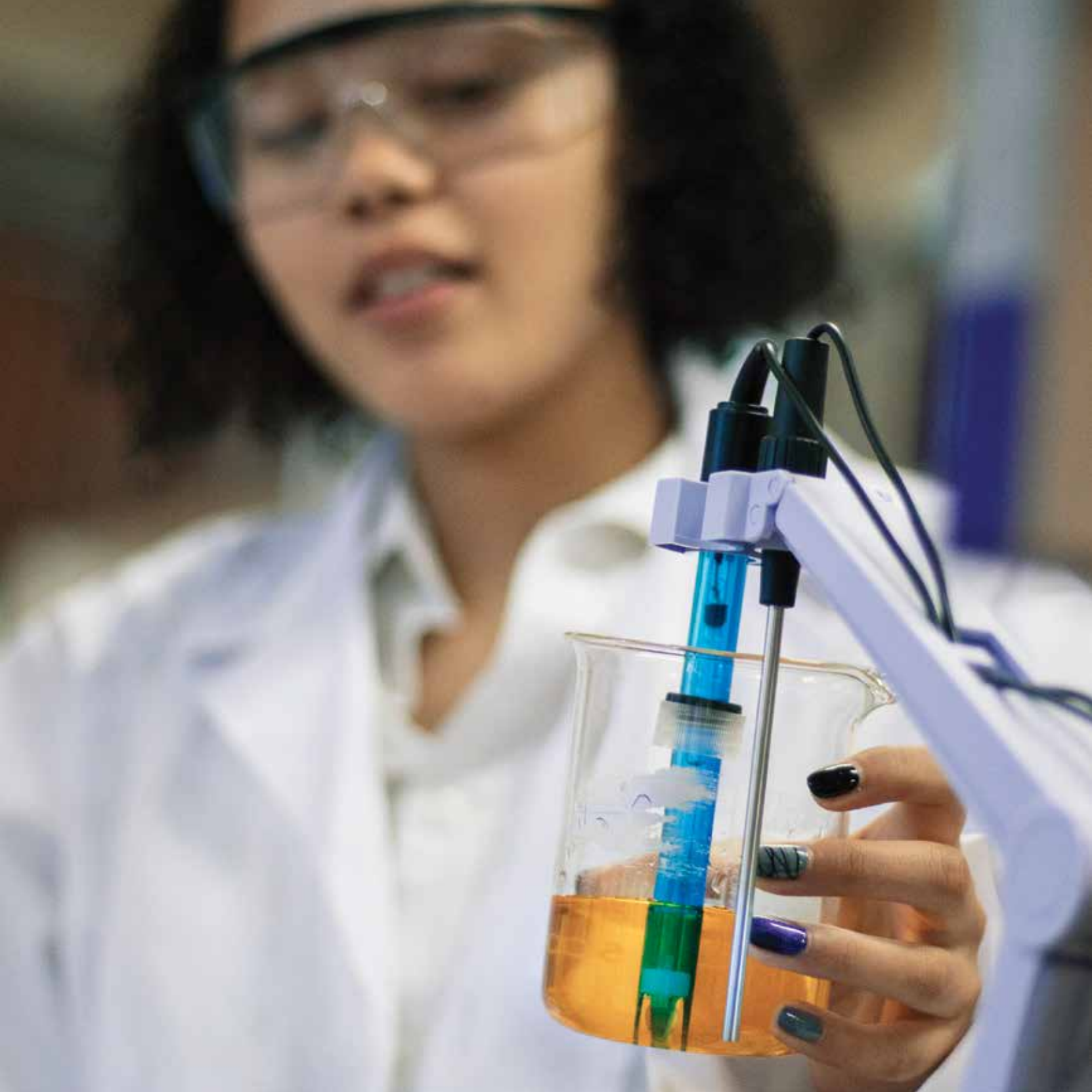
A full spectrum of diploma and degree programmes is offered, with academic staff and facilities able to support teaching and research up to doctoral level across our various campuses.

We aim to provide Nelson Mandela University stakeholders with the best learning, teaching, research, and facilities.



Research is centred around fundamental blue-sky and applied research to contribute towards the United Nations Sustainable Development Goals.

The Faculty of Science is at the cutting-edge of research, technology and innovation, working with industry to create and improve products and processes, and committed to ensuring that our natural environment is preserved for both present and future generations.





FACILITIES & VENUES

WE AIM TO PROVIDE NELSON MANDELA UNIVERSITY STAKEHOLDERS WITH THE **BEST LEARNING, TEACHING, RESEARCH, AND WORK FACILITIES** BY OPTIMALLY USING OUR INFRASTRUCTURE.

An institution-wide naming and renaming process, reflecting our identity as Nelson Mandela University, is infusing the spirit of a dynamic African university throughout our spaces.

Residences

The skyline of Summerstrand has changed with the construction of much-needed student accommodation in the Sanlam Student Village next to our South Campus. Together with new residences on North Campus, this will create on-campus accommodation for close to 6 000 students. In addition, nearly 15 000 students stay in accredited off-campus accommodation.

South Campus also has a dedicated postgraduate student village, while international students have access to on-campus residences as well as private accommodation off-campus.

Infrastructure

Flagship buildings include:

- Business School: the first building in the education or public sector to achieve a Four Green Star design rating from the Green Building Council of South Africa.
- Masakhane (BEEd Foundation Phase Building), Library and Resource Centre and advanced Medical School facilities on our Missionvale Campus.
- High Performance Complex: a state-of-the-art indoor track-and-field facility and biokinetics gym that assists top athletes to reach their full potential. There is also a new astroturf, and a fitness and aquatic centre, on South Campus, and a gym on George Campus.
- On Ocean Sciences Campus, a Science Centre and Digital Dome is due for completion in 2023.

- Growth in science and engineering has been accommodated through the Inkanyezi (Science building), Mapungubwe and Newtonian buildings (Engineering buildings).

Students have access to well-equipped libraries, laboratories, lecture halls, cafeterias, food courts, and coffee shops.

In line with our digital first approach, ICT infrastructure continues to expand to address the transformation needs of rapid technological advancement and digitalisation. We are investing in equipping smart venues and online facilities to cater for ever-evolving digital needs.

Upgrading and expansion of disability facilities and assistive technologies is ongoing across all campuses to foster an inclusive and affirming experience for all students, staff, and external stakeholders.

Special venues

The University has numerous facilities for conferences, meetings, sports, and other special events. With seating for 4 000 people, the Indoor Sport Centre on Missionvale Campus is the largest indoor venue in the Eastern Cape.

A new entrance to South Campus on Strandfontein Road reduces traffic on Admiralty Way, University Way and Gomery Avenue in Summerstrand, while a transportation hub for public transport ensures a smoother flow of traffic.



ALUMNI

THE ALUMNI ASSOCIATION ENGAGES WITH **MORE THAN 127 757 GRADUATES** SPREAD AROUND SOUTH AFRICA AND INTERNATIONALLY, FROM ALL OUR FOUNDING INSTITUTIONS.

By the end of April 2023, the University had awarded a total of 178 551 qualifications. The difference between the number of graduates and the number of qualifications, shows how many of our graduates have more than one qualification.

The Alumni Association is an important role player to promote the interests, image and reputation of the University, with alumni representing the global footprint of the University through their individual and collective efforts.

Past students are encouraged to stay in touch and, in return, are kept up to date on what is happening at their alma mater.

Regular alumni events are hosted throughout South Africa and internationally as part of the University's goal to share in the lifelong learning journey of its graduates.

Notable alumni include internationally renowned fashion designers Laduma Ngxokolo and Jenni Button, motor industry executives Johan de Nysschen and David Powels, sport personalities Russell Domingo and Dumisani Chauke, and entrepreneurs and industrialists Allan Knott-Craig Junior and Quinton Uren.

Nelson Mandela University and its predecessor institutions have conferred 153 honorary doctorates since 1968, recognising distinguished contributions to a specific field or to society in general.

Alumni benefits and services include a Nelson Mandela University application fee exemption for themselves and their children, discounted library membership and newsletters.

The Alumni Association has chapters in Nelson Mandela Bay,

East London and the Southern Cape as well as in the UK and East Africa.

The University Shop is a self-sustaining entity to retail University branded items including corporate, sport and leisure wear, conference items, stationery, and gifts. It has an online shopping facility.



Nelson Mandela University
alumni live in more than
80 COUNTRIES



Our most qualified alumnus holds
7 QUALIFICATIONS
from the University



GRADUATES TOTAL
127 718

and the number of qualifications
they hold is **178 551**

135 604

UNDERGRADUATE

35 574

POSTGRADUATE

NELSON MANDELA UNIVERSITY IN NUMBERS: 2022

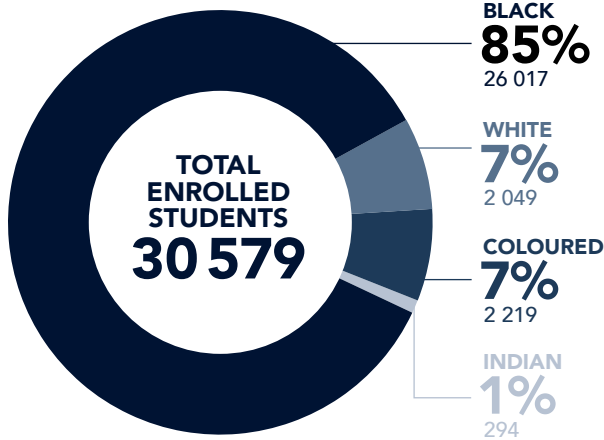
AS AT 16 MARCH 2023



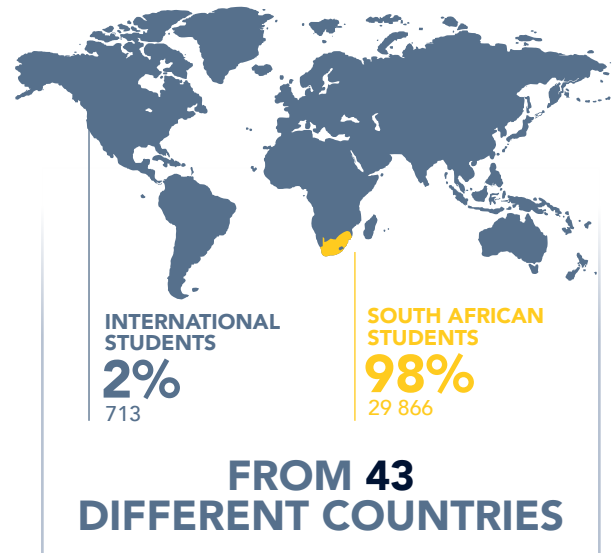
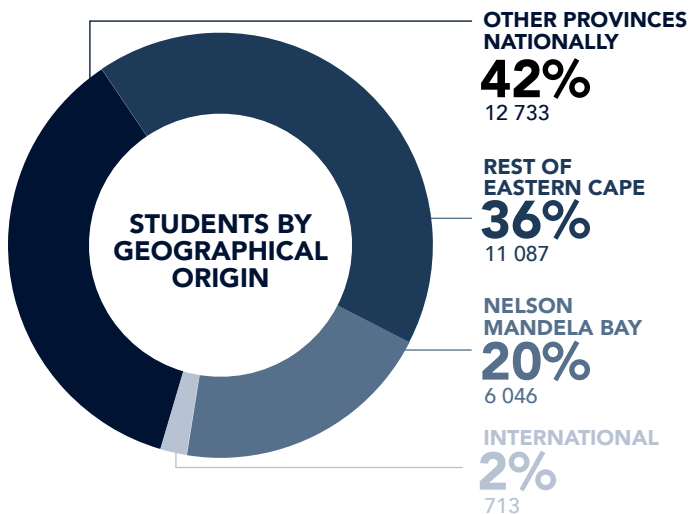
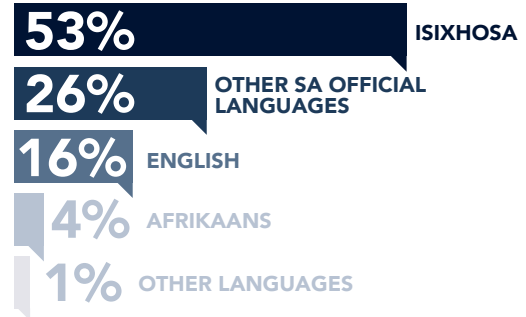
59%
FEMALE



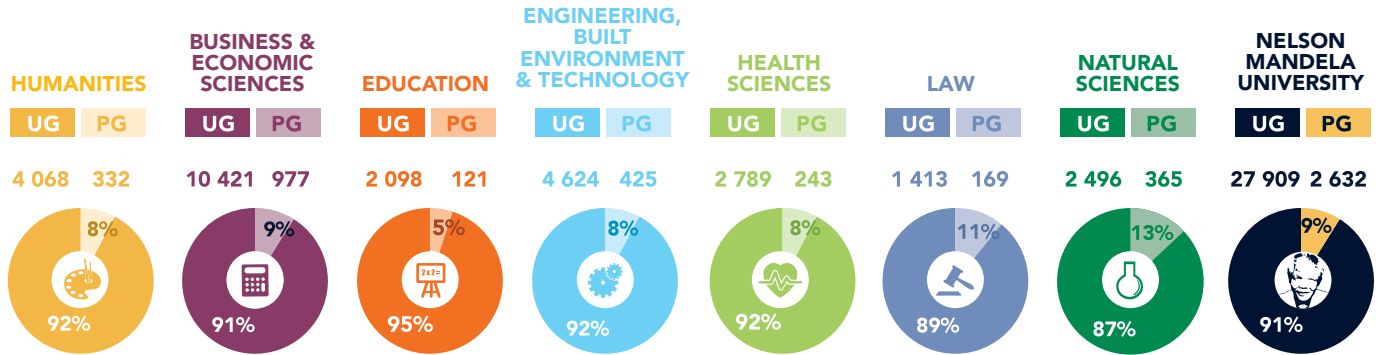
41%
MALE



HOME LANGUAGE



STUDENT ENROLMENTS BY FACULTY UNDERGRADUATE & POSTGRADUATE (UG & PG)



STUDENT ACCOMMODATION

(ON-CAMPUS)
GEORGE 626
QOEBERHA 4 437

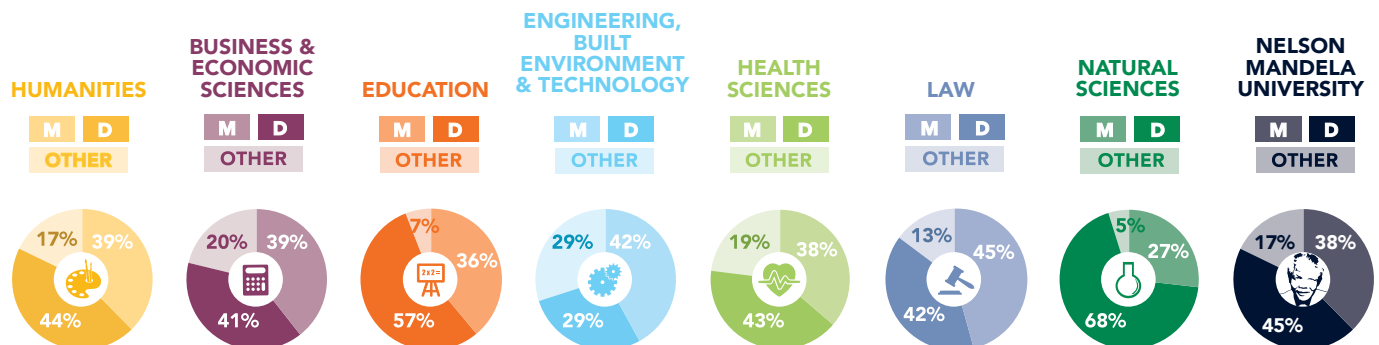
5 063
ON-CAMPUS



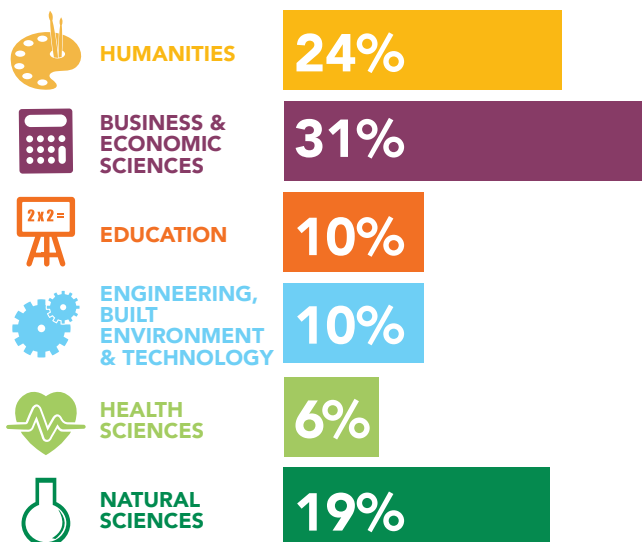
15 331
OFF-CAMPUS

(ACCREDITED OFF-CAMPUS)
GEORGE 826
QOEBERHA 14 505

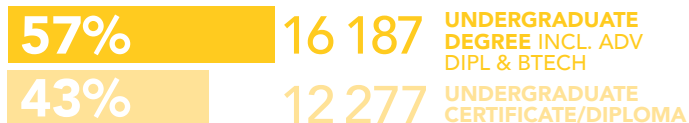
QUALIFICATIONS OF ACADEMIC STAFF BY FACULTY



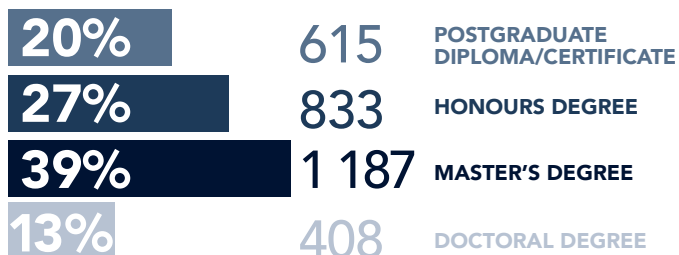
GRADUATES BY MAJOR FIELD OF STUDY



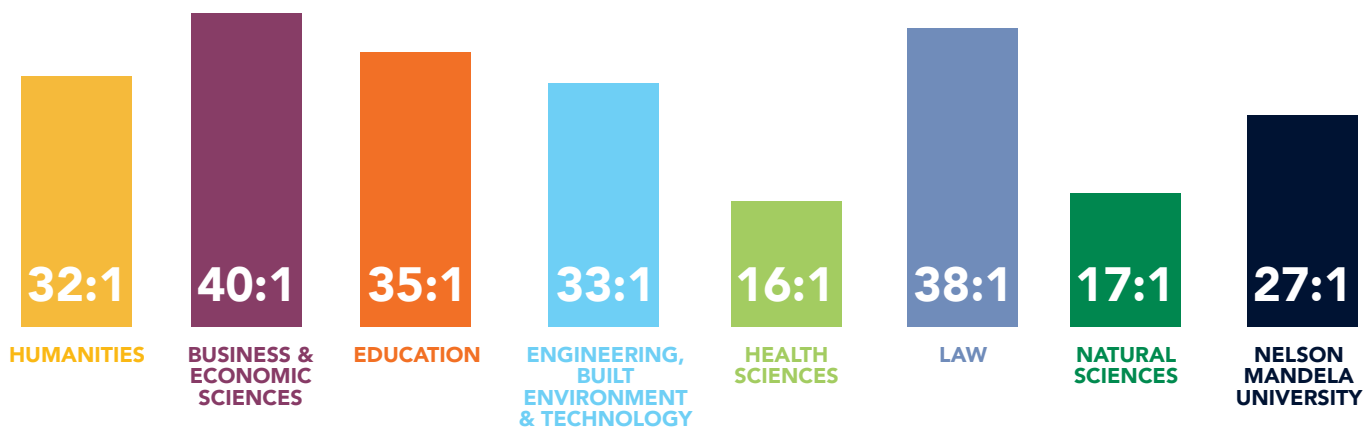
UNDERGRADUATE DEGREES CONFERRED



POSTGRADUATE DEGREES CONFERRED



FULL-TIME EQUIVALENT STUDENT TO ACADEMIC STAFF RATIO



CONTACT US

+27 (0) 41 504 1111

PO Box 77000,
Nelson Mandela University,
Gqeberha, 6031,
South Africa

info@mandela.ac.za



mandela.ac.za

