



**Nelson Mandela
Metropolitan
University**

for tomorrow

F4CTS & FI9URES

Nelson Mandela Metropolitan University (NMMU)

is a new generation university distinguished by a wide range of study options and access routes open to students. NMMU has a **vision, mission and set of values** to take it closer to achieving its shared dream for the future.

VISION

To be a dynamic African university, recognised for its leadership in generating cutting-edge knowledge for a sustainable future.

MISSION

To offer a diverse range of quality educational opportunities that will make a critical constructive contribution to regional, national and global sustainability.

VALUES

Our six core values serve as a compass for our actions and describe how we should behave in the world - ubuntu, taking responsibility, excellence, respect for diversity, respect for the natural environment and integrity.

NMMU is a comprehensive university, offering both general and professionally orientated university programmes from the **entrance level** (certificate) through to **research level** (PhD).

WE OFFER

450 OVER **7 FACULTIES**
PROGRAMMES

TO EQUIP **27 000+** STUDENTS

FOR CAREERS IN MORE THAN **130** BROAD FIELDS

5 of NMMU's campuses are in Nelson Mandela Bay

These campuses are in

Summerstrand (three campuses)

next to the ocean,

Bird Street

in the heart of the city, and in

Missionvale

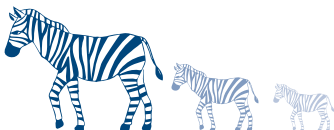
Situated on the Garden Route is NMMU's

George Campus

This beautiful campus at the foot of the Outeniqua Mountains.

Our *North* and *South* campuses
in Summerstrand are on a

**720-hectare private
nature reserve**



ACADEMIC

NMMU's academic focus areas – which strategically direct the university's core business of teaching and learning, research and engagement – are the following:



Health & wellness

Economic & business development

(focussing on job creation & entrepreneurship)



Materials & process development
for industry and manufacturing

Emerging ICT for development



Environmental and natural resource management

Culture, communication & language



Leadership, governance, democracy and justice

Educational development in support of excellence

in teaching, learning and curriculum



Infrastructure and human settlement development

RESEARCH AND ENGAGEMENT

NMMU has:

Research Chairs **10** NRF-rated researchers **81**

Research themes **13** Research Entities **29**

Centres **11** Units **14**

Institutes **4** Technology Stations **2**

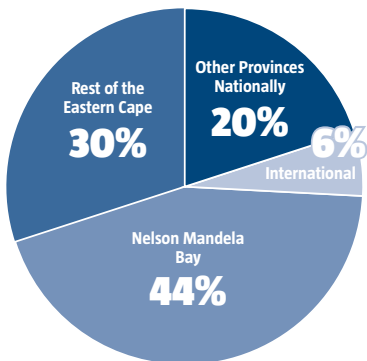
Academic staff with Doctoral Degrees **278**

NMMU's programmes, research and services are responsive to **community needs**.

The university has strong links with industry and businesses nationally and internationally, especially in Africa – and particularly within the **automotive, tourism and pharmaceutical industries**.

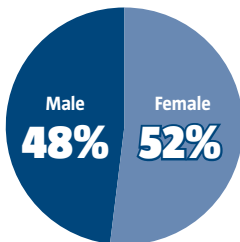
STUDENTS

NMMU enrolled students by Geographical origin

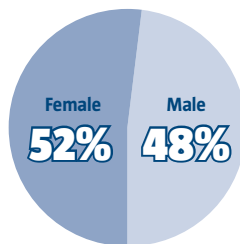


NMMU 2015 enrolments by gender

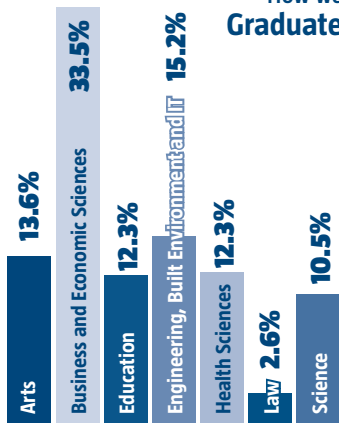
Undergraduate



Postgraduate



How we Graduate



	Male	Female
Undergraduate	10 797	11 776
Postgraduate	1 820	1 966
Total enrolled	12 617	13 742

INFRASTRUCTURE GROWTH

Over the past few years, NMMU has experienced unprecedented infrastructure growth, in support of its teaching, learning and research.



2015

R150m spent on:

- ▶ Art Gallery at Bird Street
- ▶ George Campus Gym
- ▶ Disability projects
- ▶ Bitumen Lab on North Campus
- ▶ CSIR building repurposing for Health Sciences

2016

Projects to be completed:

- ▶ Science building on South Campus
- ▶ Education building at Missionvale Campus
- ▶ Engineering building phase 2 on North Campus
- ▶ AstroTurf on South Campus
- ▶ InnoVenton extension

NMMU has applied for future infrastructure development for additional residences, a maritime campus and lecture halls.